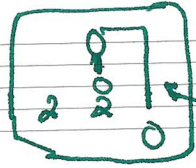


# Clawhammer Banjo

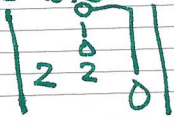
# Hobo's Lullaby

OPEN G TUNING  
tab modified by CJ from  
JAN-OLOV Sundqvist - VERSION

By Woody Guthrie



miss written  
this show it should look



Handwritten musical notation for 'Hobo's Lullaby' in 4/4 time, featuring clawhammer banjo techniques. The notation includes circles for notes, stems, and various fretting and playing instructions.

Line 1: 4/4 time signature. Notes: 0, 2, 2, 4 (with 'SL' above), 0, 2, 2, 4 (with 'H' above), 2, 2, 2, 0, 2, 2, 2, 0.

Line 2: 4/4 time signature. Notes: 2, 2, 2, 0, 2, 2, 2, 0, 2, 0, 4, 2, 0, 0, 0, 0, 0, 0.

Line 3: 4/4 time signature. Notes: 0, 0, 0, 0, 0, 0, 0, 2, 2, 4 (with 'SL' above), 4, 0, 0, 2, 2, 0, 2, 0.

Line 4: 4/4 time signature. Notes: 2, 2, 0, 2, 2, 0, 2, 4, 0, 0, 2, 0, 0, 0, 0, 0.

Line 5: 4/4 time signature. Notes: 0, 0, 0, 0, 0, 0.